

API Management: Developer guide

EEO Developer Platform

PLEASE READ THE IMPORTANT DISCLOSURES BELOW.

E*TRADE Financial Corporate Services, Inc. is located at 3 Edison Drive, Alpharetta, GA 30005.

The E*TRADE Financial family of companies provides financial services that include trading, investing, banking and managing employee stock plans.

Employee stock plan solutions are offered by E*TRADE Financial Corporate Services, Inc.

Securities products and services are offered by E*TRADE Securities LLC, Member [FINRA](#) / [SIPC](#).

In connection with the stock plan solutions offered by E*TRADE Financial Corporate Services, Inc., E*TRADE Securities LLC provides brokerage services to stock plan participants.

E*TRADE Financial Corporate Services, Inc. and E*TRADE Securities LLC are separate but affiliated companies.

The laws, regulations and rulings addressed by the products, services and publications offered by E*TRADE Financial Corporate Services, Inc. and its affiliates are subject to various interpretations and frequent change. E*TRADE Financial Corporate Services, Inc. and its affiliates do not warrant these products, services and publications against different interpretations or subsequent changes of laws, regulations and rulings. E*TRADE Financial Corporate Services, Inc. and its affiliates do not provide legal, accounting or tax advice. Always consult your own legal, accounting and tax advisors.

©2020 E*TRADE Financial Corporation. All rights reserved.

Introduction

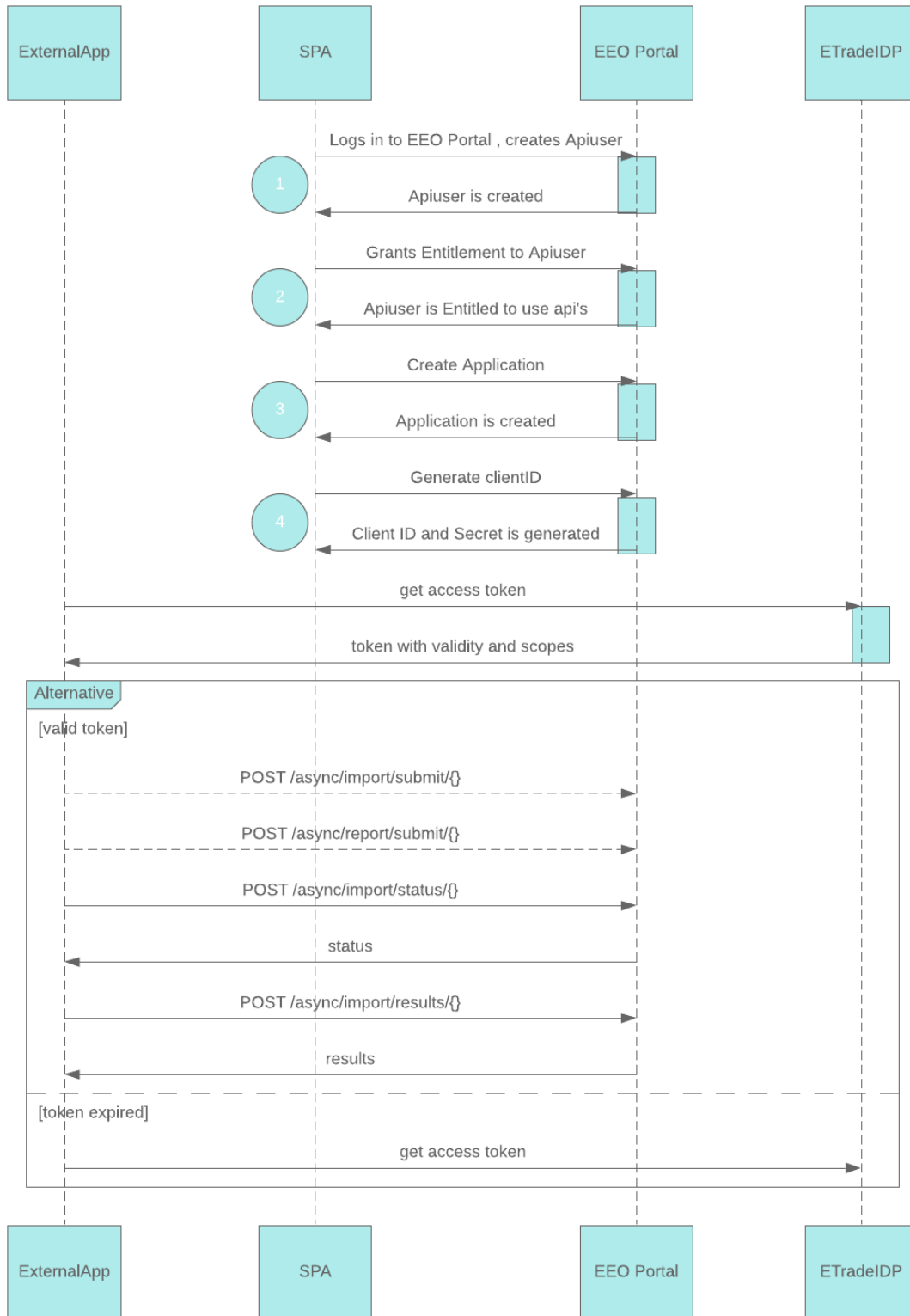
The E*TRADE Equity Edge Online® (EEO) Developer Platform uses the OAuth authorization protocol. Version 2.0 of OAuth enables an authenticated user to authorize access to E*TRADE Corporate Services API's for use in their applications, without exposing user credentials or other sensitive information. This document provides a brief summary of OAuth and describes how it is used in our developer platform. More information about OAUTH can be found at the following link: <https://oauth.net/2/>

OAuth workflow

Role	Definition	Example
Service provider	A service provider that uses OAuth to allow a third-party application to have limited access to a user's account	E*TRADE EEO Developer Platform
User	A Stock plan administrator (SPA) or a member of the HRIS IT team at the company who is responsible for creating and managing users and privileges	E*TRADE Corporate Client/SPA
Consumer	A website or application that uses OAuth to access the service provider's platform with the user's permission	External application (For information on how to create the application, please see the article titled API Management located on the Community tab of the Client Resource Center (CRC))

E*TRADE OAuth lifecycle

- The application uses its own credentials to acquire a temporary access token from E*TRADE by calling the Get Access Token API
- The SPA will need to go into EEO and grant the user access to the account in order for the user to utilize to the desired imports and reports
- EEO will generate a Client ID and secret code, which is passed to the application (manually by the user/SPA).
 - The application uses the Client ID and secret code to acquire an access token which grants temporary access to that user's account
 - This is done with the Get Access Token API
- The access token should be included with all requests to the EEO API's, for identifying the user and authorizing the application
- If your application does not make any API requests for 3599 seconds, the access token becomes inactive, and the token needs to be requested again



For further information

Contact your Relationship Manager for assistance.

EXTRADE[®]
CORPORATE SERVICES